

The Island Magazine

Number 18

Fall/Winter 1985

\$3.50



IN THIS ISSUE:

St. Eleanors

A Letter from The Great Famine

Lebanese Peddlers

The Builder: Isaac Smith

The View from the Hill

Genealogy

Book Reviews

The Island Magazine is a semi-annual publication of the human and natural heritage of Prince Edward Island

Editor
Edward MacDonald

Editorial Committee
Bill Ledwell
Ian MacQuarrie
Irene Rogers
Robert C. Tuck
Elinor Vass

Supervisor of Publications
Linda Paoli Steele

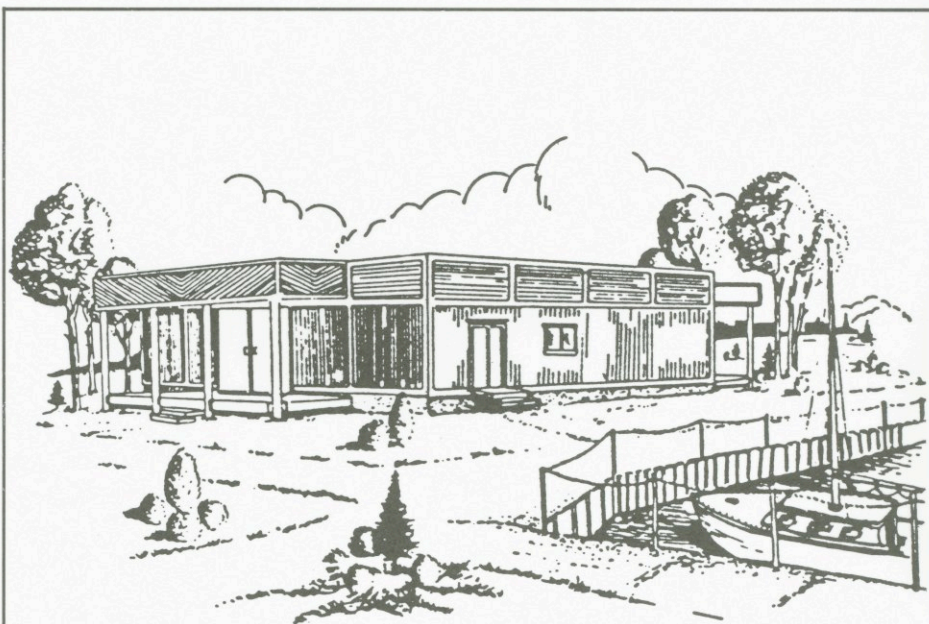
Layout
Landis Design

Illustration
D. Doyle
R. Matheson
R.C. Tuck

Printing
Williams & Crue Limited,
Summerside

All correspondence should be addressed to
The Island Magazine,
Prince Edward Island Museum
and Heritage Foundation,
2 Kent Street,
Charlottetown,
Prince Edward Island
C1A 1M6

Subscriptions are available
at a cost of \$7.00 per
calendar year (two issues).
Standing - or automatic
renewal - orders may also
be placed



EPTEK

national exhibition centre/centre national d'exposition

Presenting a year round schedule of in-house and nationally touring exhibitions of Fine Art, History, Science and Crafts.

Eptek Centre also hosts a number of cultural activities and events of interest to the public.

For up-to-date information, watch the Eptek Column published weekly in the *Guardian* and the *Journal-Pioneer* or broadcast by local radio stations and Cable 5.



130 Water Street E., P.O. Box 1378, Summerside, P.E.I. C1N 4K2 436-4737



Published by
Prince Edward Island Museum
and Heritage Foundation

Published with the generous assistance
of the Secretary of State.